



RoHS

TOPTEK®  
HARDWARE ELECTRONIC MANUFACTURER



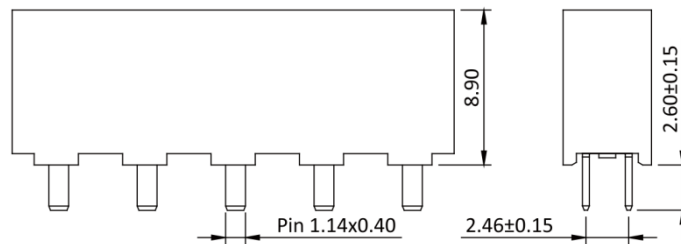
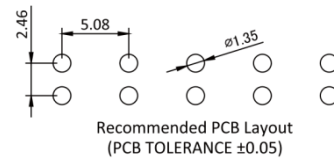
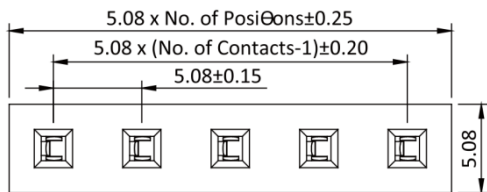
## Female Header 5.08mm 1 Row H=8.9mm Straight Type

### Specifications

Current Rate:7 AMP  
Insulation Resistance:1000MΩ Min.  
Contact Resistance:20mΩ Max.  
Dielectric Voltage:1000V AC for one minute  
Operation Temperature:-40°C to +105°C

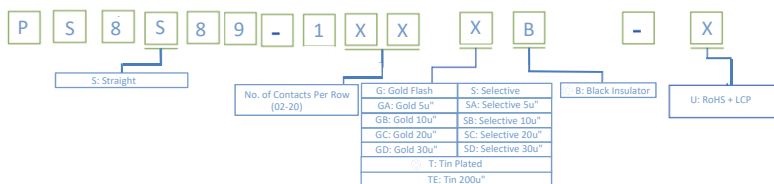
### Material

Insulator:Polyster,UL 94V-0  
Standard:LCP  
Terminal:Copper Alloy  
Plating:Tin Plated



Part No.:PS8S89-1XX-X

## ORDER INFORMATION



◎:Standard Recommend

